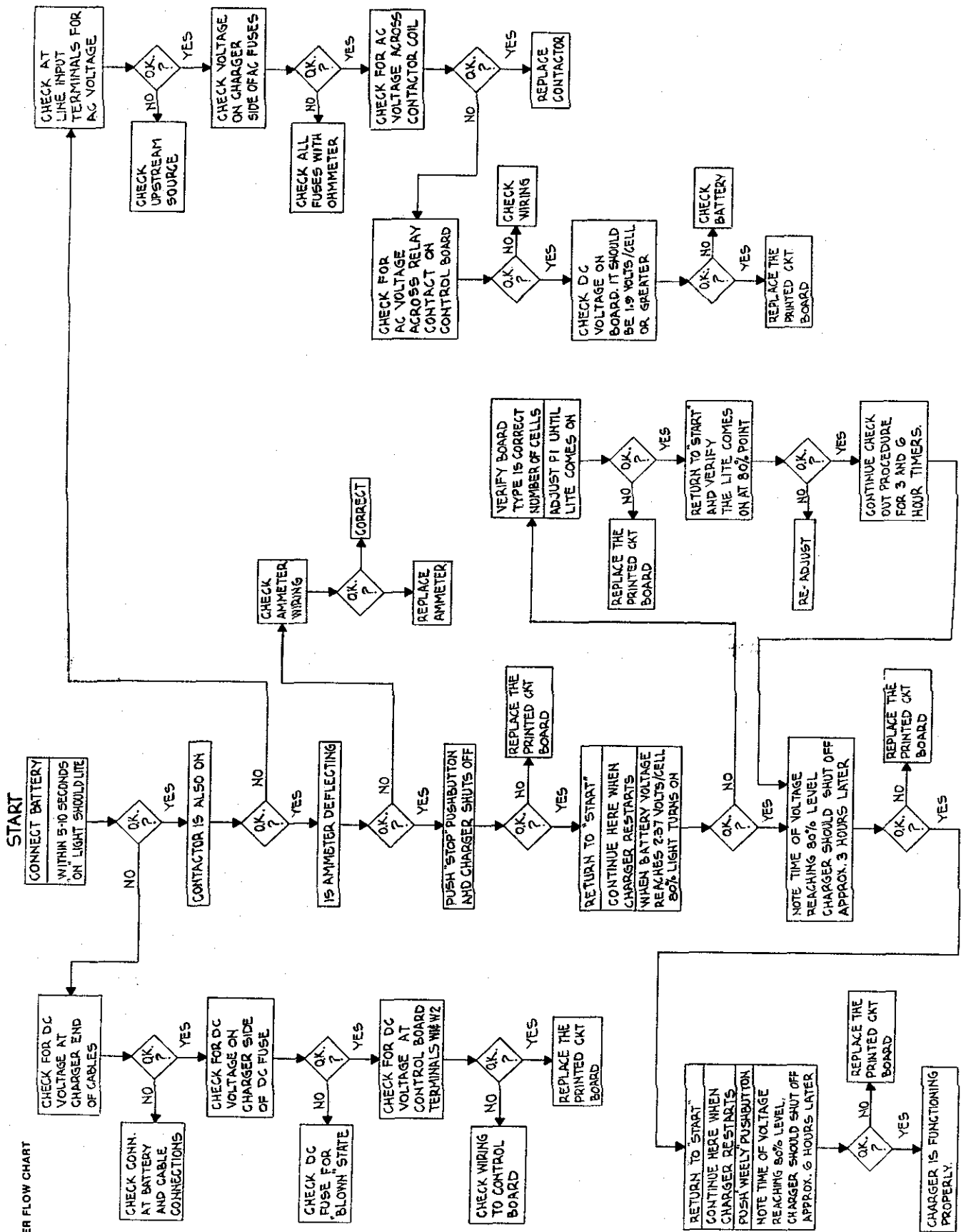


TYPE F - CHARGER FLOW CHART



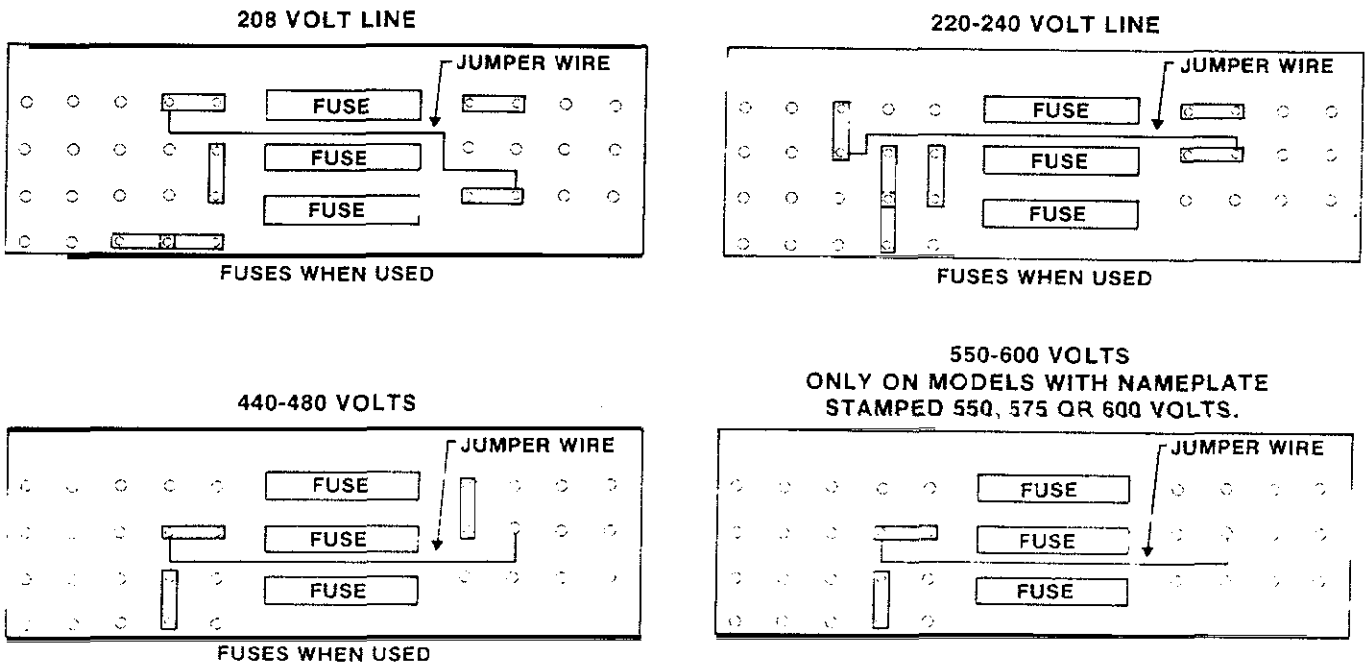
**TABLE 3  
TYPE F SINGLE PHASE INPUT VS. FUSE RATING CHART**

Charger Model	Max Output	120		208		240		480	
		Fuse	Line Current	Fuse	Line Current	Fuse	Line Current	Fuse	Line Current
6-225	42	18	7.4	5	4.2	5	3.6	3	1.8
6-380	73	15	12	8	7	8	6	4	3
6-450	86	20	13	10	7.4	10	6.4	6	3.2
6-550	101	20	14	10	8	10	7	6	3.5
6-600	122	25	16	15	8	15	5	6	4
6-680	135	25	18	15	10	15	9	6	4.5
6-775	153	35	20	20	12	20	10	10	5
<hr/>									
9-450	86	25	18	15	10	15	9	8	4.5
9-550	101	30	20	15	12	15	10	8	5
<hr/>									
12-225	42	20	14	10	8	10	7	6	3.5
12-380	73	25	20	15	12	15	10	8	5
12-450	86	30	24	15	14	15	12	8	6
12-550	101	40	28	25	16	25	14	10	7
12-600	122			30	18	30	16	15	8
12-680	135			30	21	30	18	15	9
12-775	153			30	24	30	21	15	18.5
<hr/>									
15-450	86			25	18	25	15	12	7.5
15-550	101			25	21	25	18	12	9
<hr/>									
16-450	86			25	18	25	15	12	7.5
16-550	101			25	21	25	18	12	9
<hr/>									
18-380	73			20	16	20	14	10	7
18-450	86			30	18	30	16	15	8
18-550	101			35	23	35	20	15	10
18-600	122			40	28	40	24	20	12
18-680	135			45	30	45	26	20	13

**LINE VOLTAGE SETTINGS — 208/240/480 & 575 VOLT MODELS**

**IMPORTANT:** LINE FUSES AND LINE CONTACTOR COIL MUST ALSO BE ADJUSTED. SEE FIGURES 1 THRU 4.

**CAUTION:** The terminal panel must look like the drawings below:

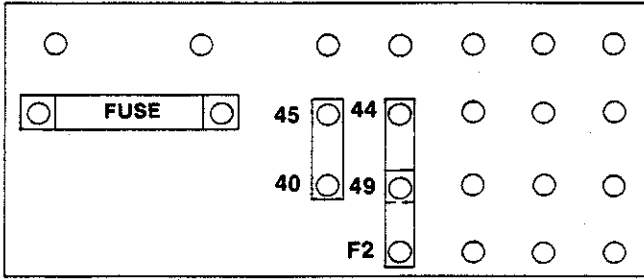


Three Phase Link Settings  
FIGURE 1

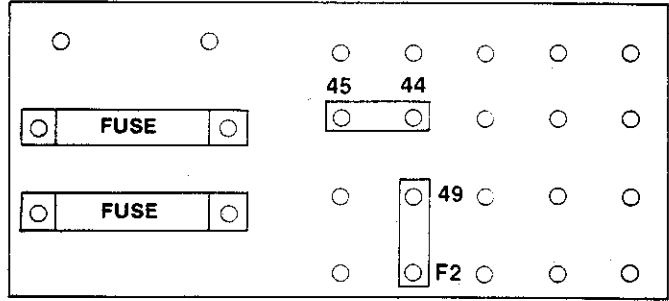
**FIGURE 2**

**TYPE G SINGLE PHASE  
LINE VOLTAGE SETTINGS —  
208/240/480 & 575 VOLT MODELS  
LINK CONNECTIONS**

**110/120 VOLT LINE**

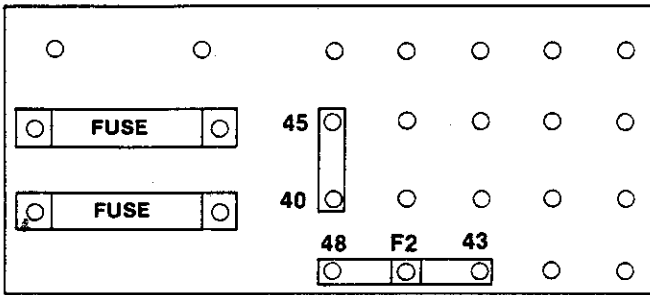


**550-600 VOLT LINE  
(USE ONLY ON MODELS STAMPED  
550, 575 OR 500 VOLTS.)**



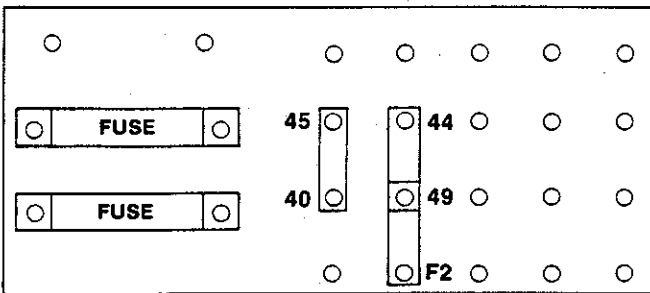
**FUSES WHEN USED**

**208 VOLT LINE**



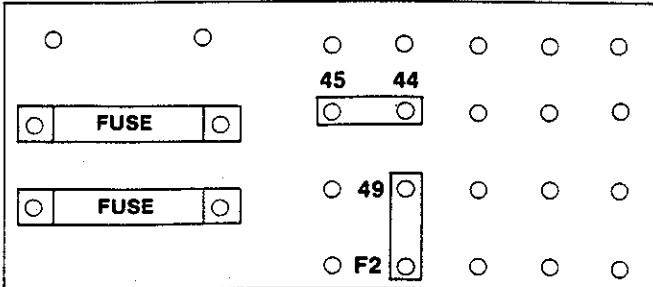
**FUSES WHEN USED**

**220-240 VOLT LINE**



**FUSES WHEN USED**

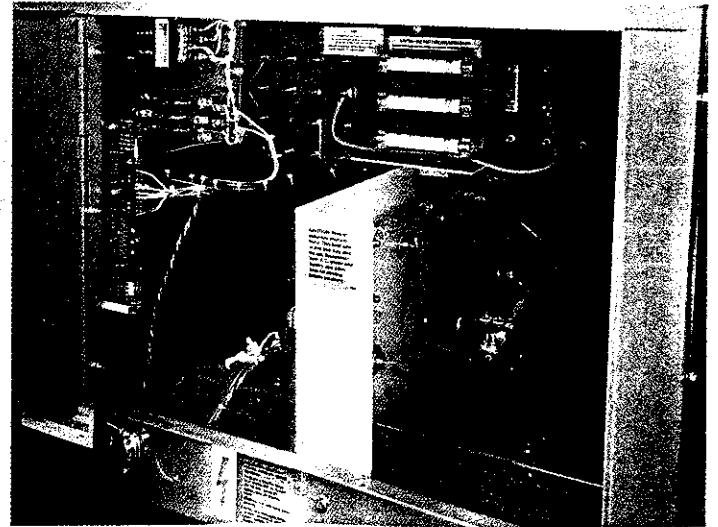
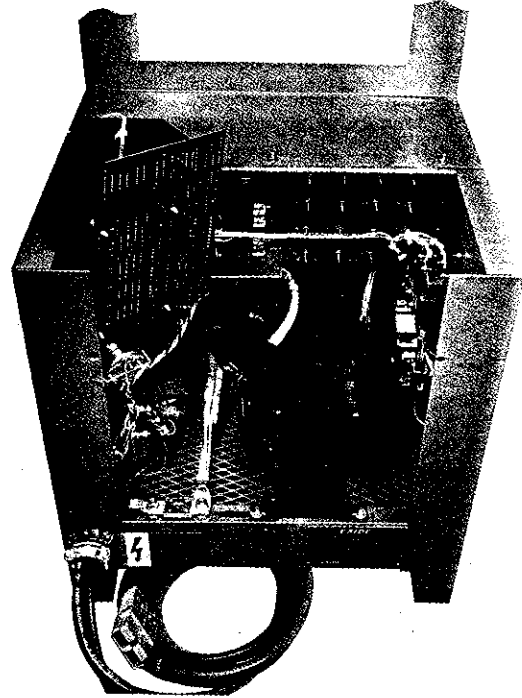
**440-480 VOLT LINE**



**FUSES WHEN USED**

**WARNING**

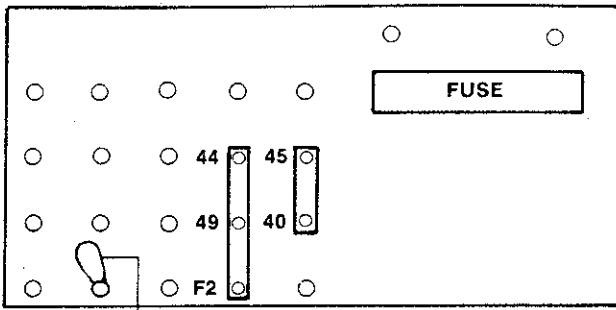
When changing jumper link connections, ensure that all links are tightened securely onto the terminal block. Loose connections may cause damage to the charger and/or battery.



208/240/440-480 VOLT MODELS ONLY

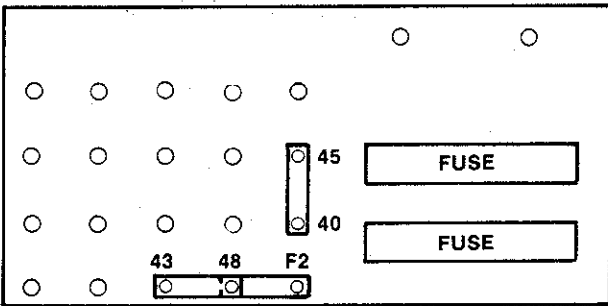
**TYPE F SINGLE PHASE  
LINE VOLTAGE SETTINGS —  
208/240/480 & 575 VOLT MODELS  
LINK CONNECTIONS**

**110/120 VOLT LINE**

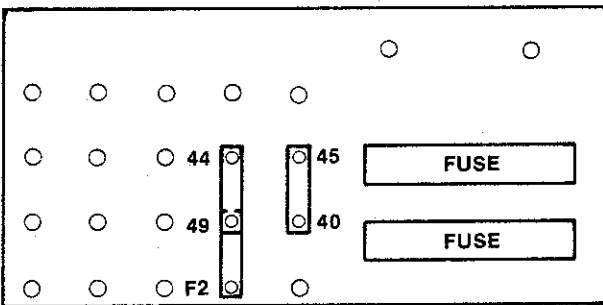


JUMPER

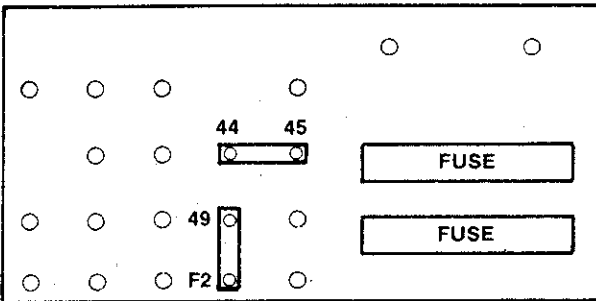
**208 VOLT LINE**



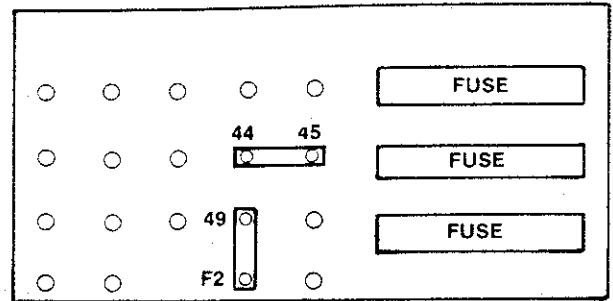
**220-240 VOLT LINE**



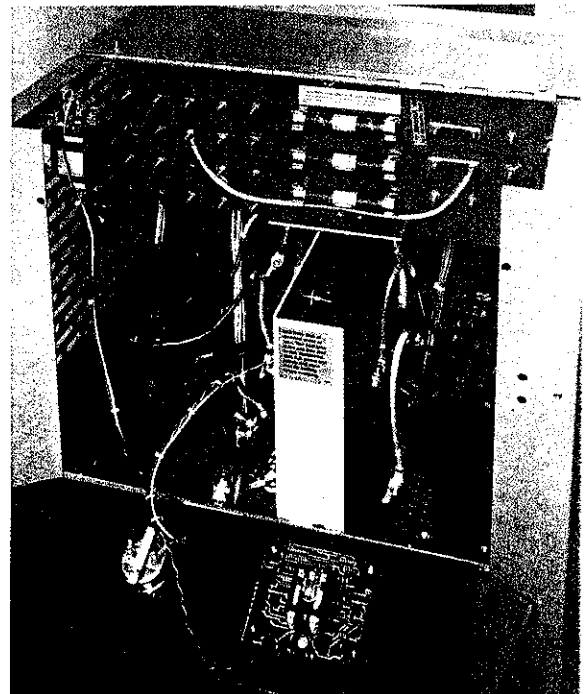
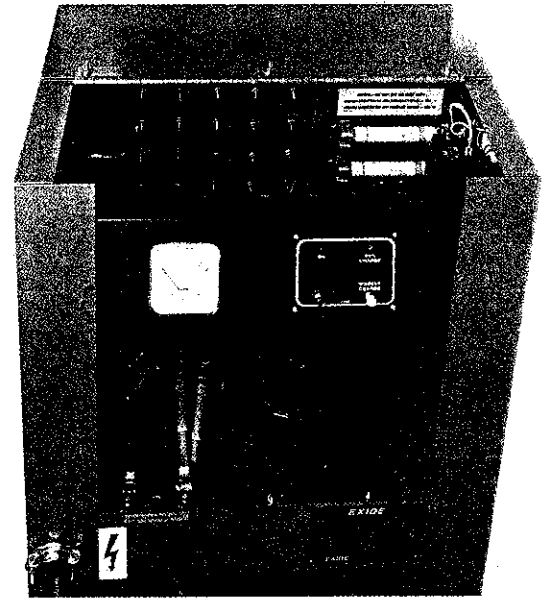
**440-480 VOLTS**



**550-600 VOLTS  
ONLY ON MODELS WITH NAMEPLATE  
STAMPED 550, 575 OR 600 VOLTS.**



Single Phase Link Settings  
Figure 2



**WARNING**

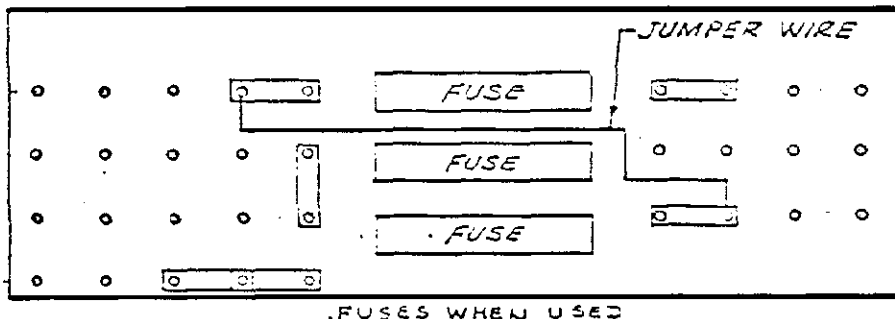
When changing jumper link connections, ensure that all links are tightened securely onto the terminal block. Loose connections may cause damage to the charger and/or battery.

208/240/480 VOLT MODELS ONLY

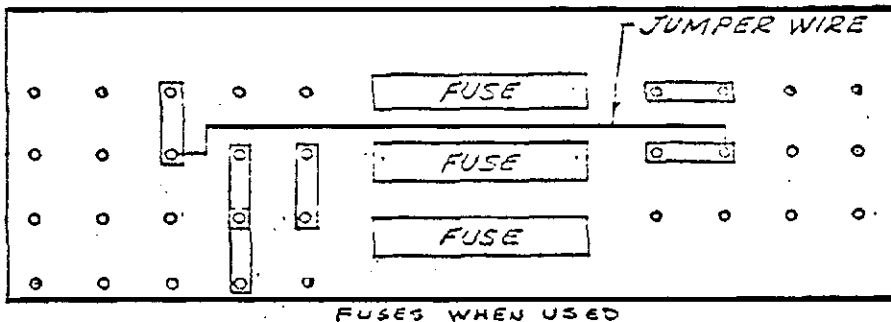
LINE VOLTAGE SETTINGS - LINKS & JUMPER

IMPORTANT! LINE FUSES, AND CONTROL TRANSFORMER MUST ALSO BE ADJUSTED. SEE SECTION VII AND FOLLOWING SHEETS BEFORE CHANGING

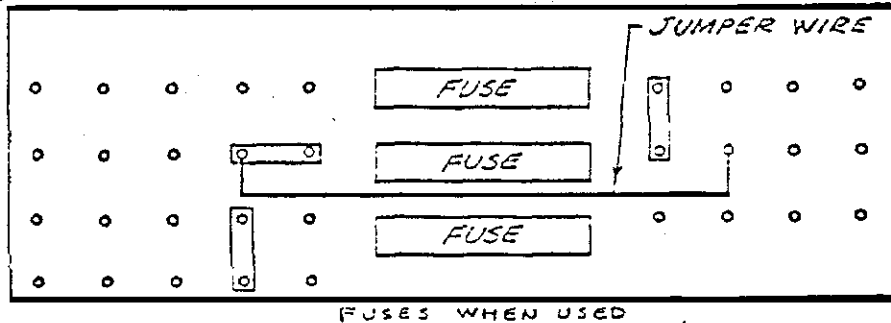
208 VOLT LINE



220-240 VOLT LINE



440-480 VOLTS



550-600 VOLTS ONLY ON MODELS WITH NAMEPLATE STAMPED 550, 575 OR 600 VOLTS.

